

<http://bit.ly/2vltShe>

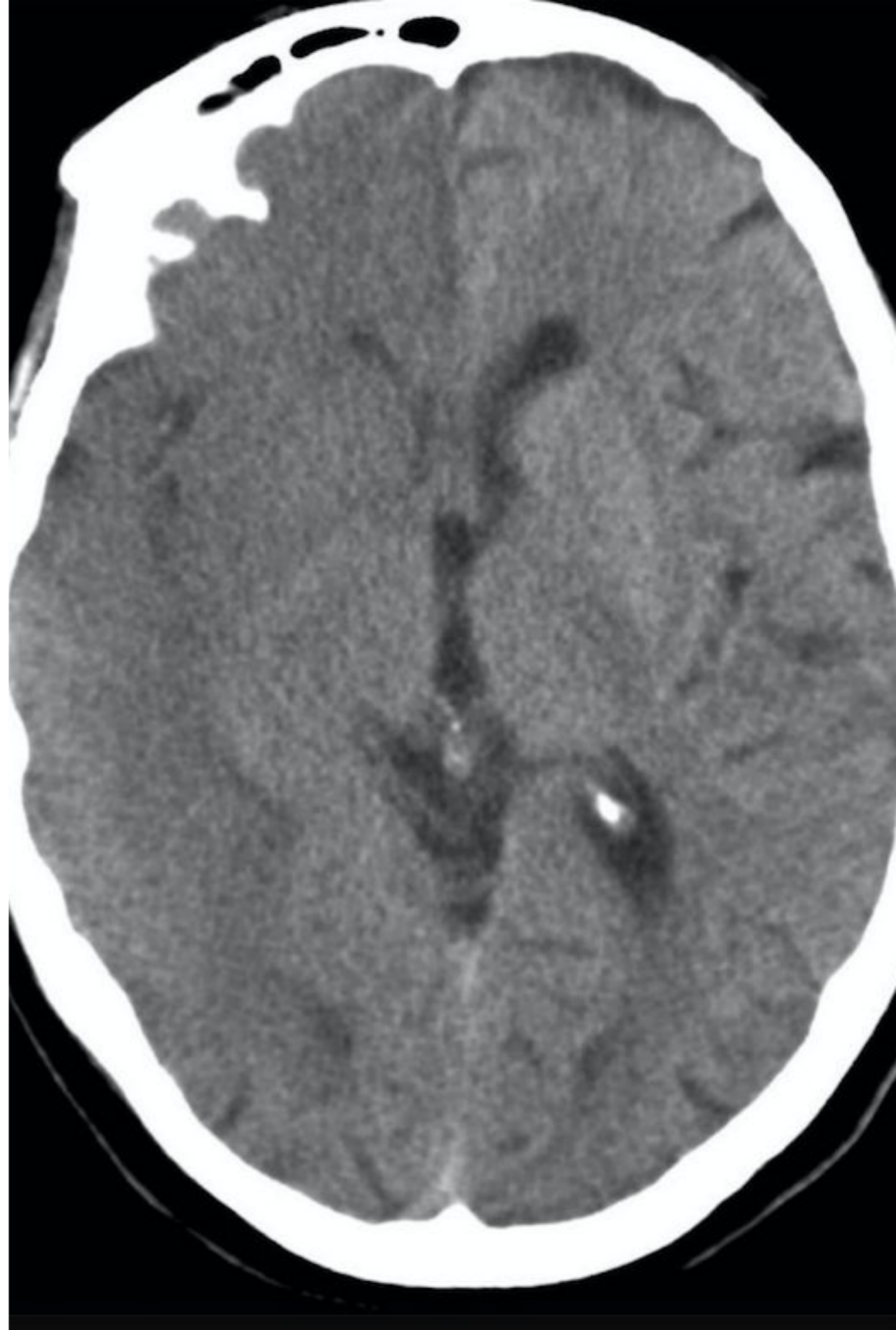
---

Mr. Tao Hin Hin

# AMS: Initial Investigations

---

- CBG/Hypocount
- FBC
- UECr
- CT brain
- PT/PTT



# Ischemic stroke: Determining etiology

---

- MRI brain with MRA
- US Carotids
- ECG
- Fasting glucose
- HbA1c
- Fasting lipids

## Cerebral Vascular Territories

Anterior cerebral artery (ACA)

Anterior cingulate arteries

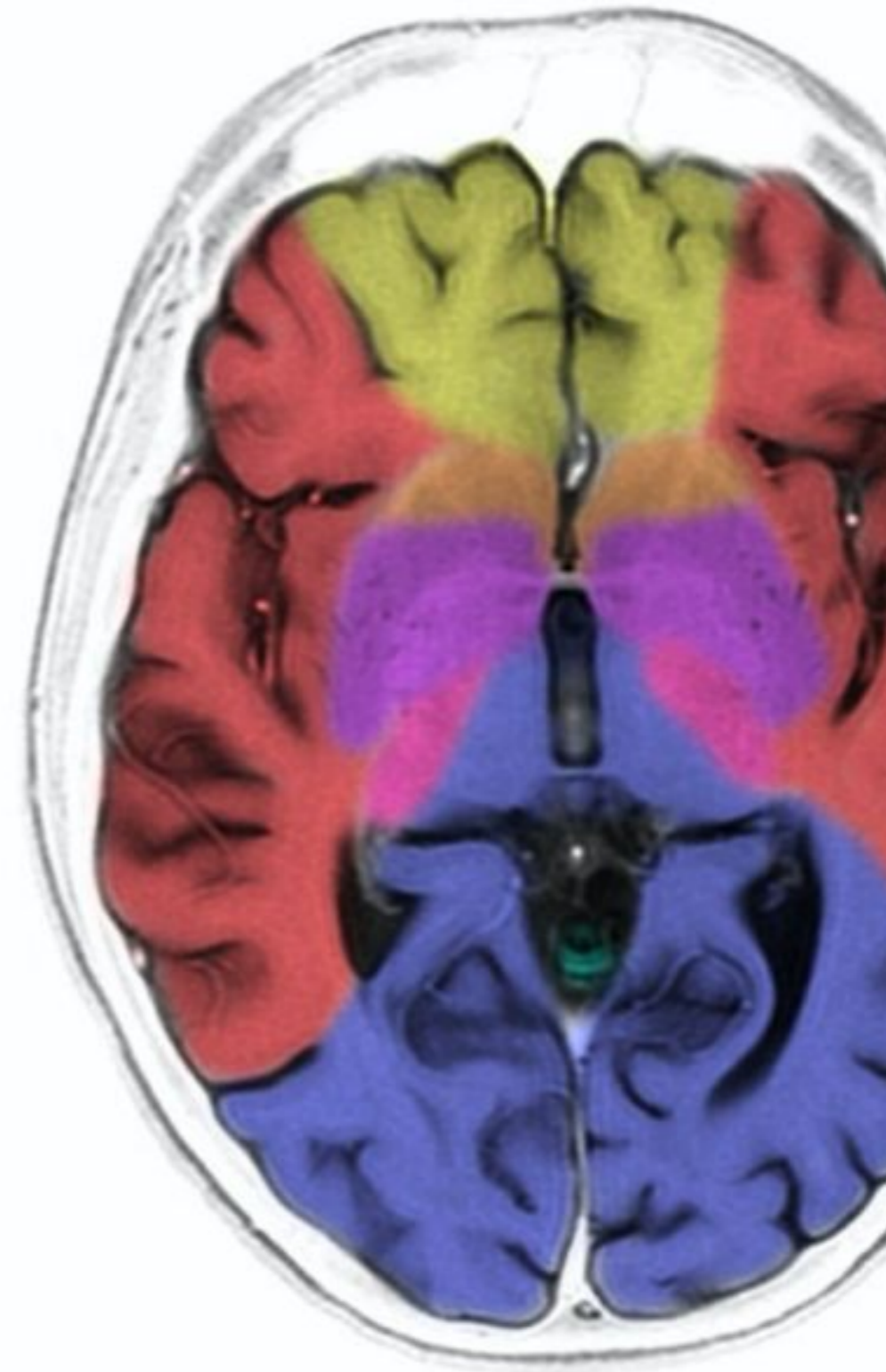
Orbital artery

Middle cerebral artery (MCA)

Lenticulostriate arteries

Posterior cerebral artery (PCA)

Subclavian artery (SCA)



# Indications for tPA

---

- Age > 18
- Clinical ischemic stroke with neurological deficit
- Time of onset <4.5h



# BP targets

---

- BP < 220/140 Permissive hypertension in acute ischemic strokes
- BP < 180/110 before and after thrombolysis
- SBP < 140 for ICH
- SBP < 140/90 for subacute stroke, age < 60 or T2DM
- SBP < 150/90 for subacute stroke, age > 60



# Stroke Rehab

---

- Consider home environment in setting goals
- Early rehabilitation
- Multidisciplinary Stroke Team essential

